

*Pain in the Nation: Drug, Alcohol & Suicide Epidemics & the **Need for a National Resilience Strategy***

John Auerbach, President and CEO
Trust for America's Health
April 18, 2018

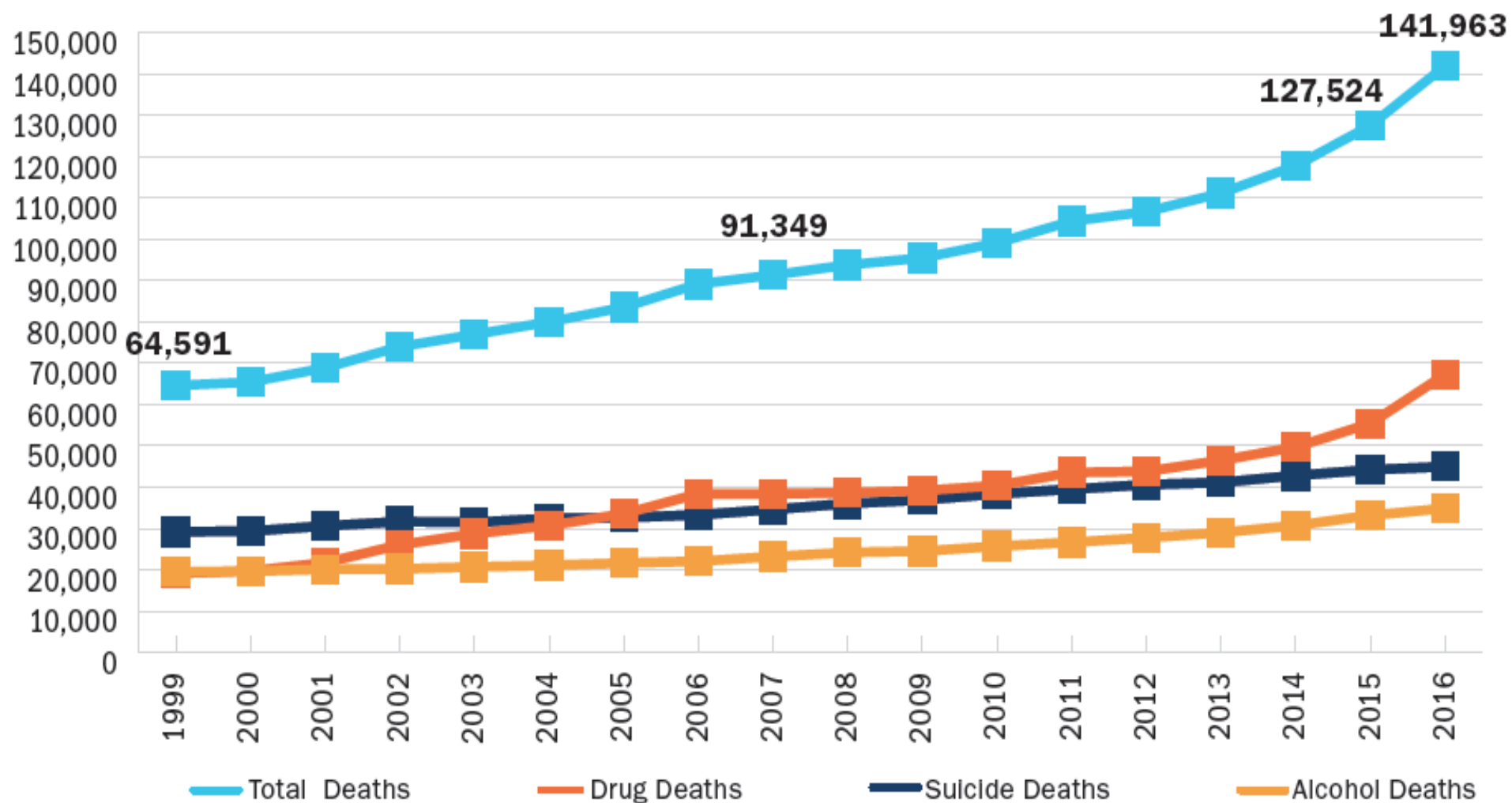


New National Findings in 2016

- ❑ Death still increasing - 11%
- ❑ 142,000 deaths from drug, alcohol & suicides - *record level*
- ❑ Deaths could reach 2 million in next decade

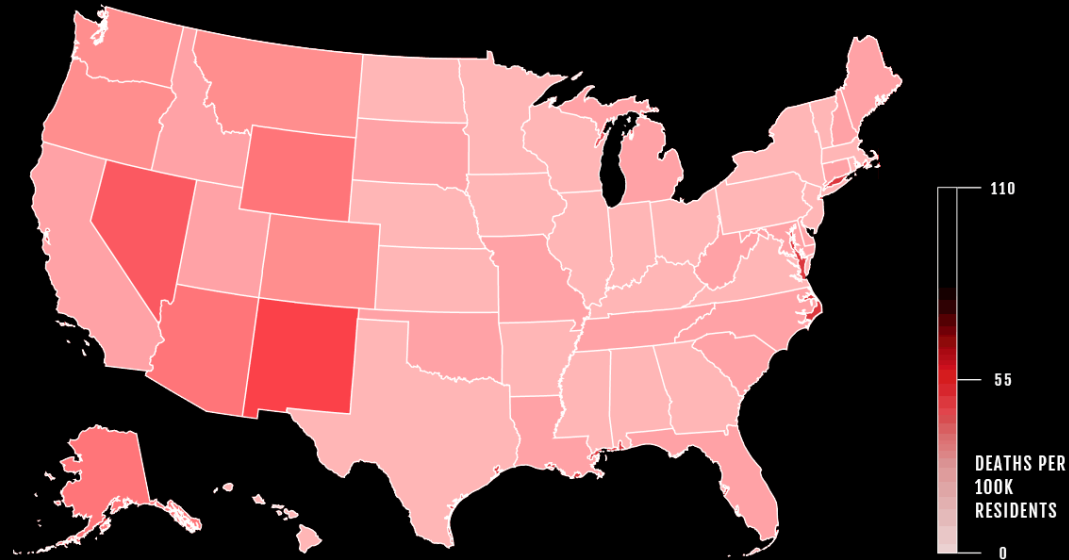


Annual Deaths from Alcohol, Drugs and Suicide, 1999-2016



PAIN IN THE NATION

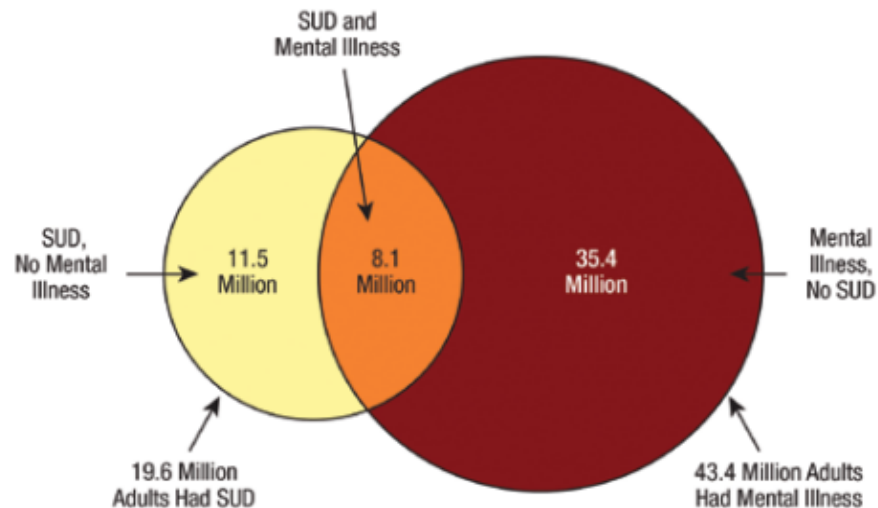
Deaths from drugs, alcohol and suicide 1999 to 2025 (PROJECTED)



1999

Trends in Alcohol, Drug and Suicide

Past Year Substance Use Disorder (SUD) and Mental Illness among Adults Aged 18 or Older: 2015

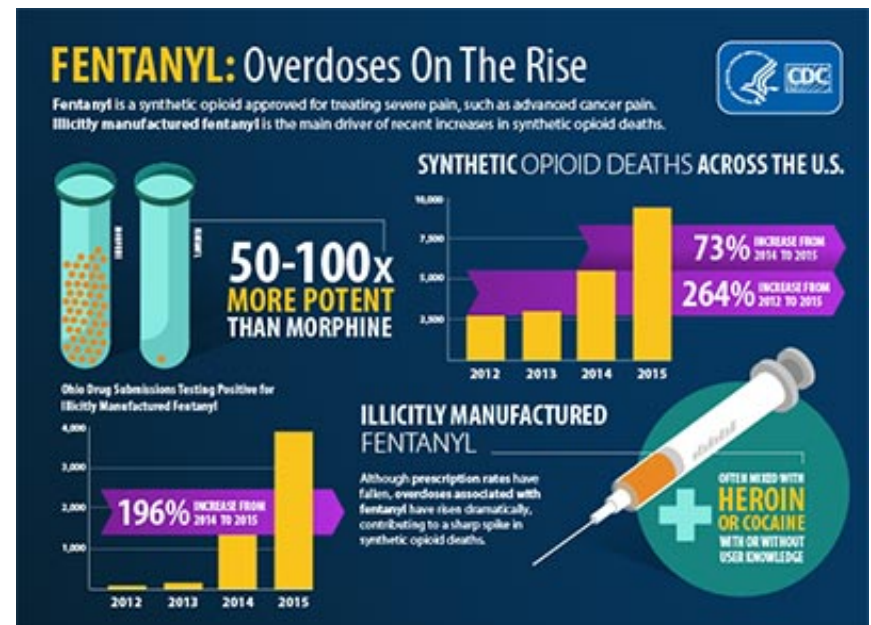


Source: SAMHSA, National Survey on Drug Use and Health

- 43 M with mental health diagnosis
- 20 M with substance use disorder (SUD)
- 8 M have both
- 2/3 have adverse childhood experiences (ACEs)

Recent Developments

- "Synthetic" opioids (Fentanyl) deaths grew most rapidly
 - Growth slows from prescription deaths
- More populations affected
 - Black deaths up by 39% & Hispanic by 24%
 - White -still highest rates



Responses to the Crisis



Some progress with focus on:

- ❑ Prescribing practices
- ❑ Overdose reversal
- ❑ Access to treatment -including MAT

Additional needs

- ❑ Prevention - "upstream"
- ❑ Increasing illicit drugs

A Path Forward: a National Resilience Strategy



Reduce stigma and change social norms



Increase protective factors and reduce risk factors in communities



Strengthen multi-sectoral collaboration



Improve prevention infrastructure



Optimize the use of cross-sector data for decisionmaking

Source: ASTHO

- ❑ Addiction & suicide - public health issues
- ❑ Comprehensive approach needed from harm reduction to treatment to early prevention efforts
- ❑ Life conditions key/multi-sector approaches needed
- ❑ Public health can assist