

**Measles: A Local Public Health Perspective from
Seattle & King County, Washington**

**Jeff Duchin, MD
Health Officer, Public Health – Seattle & King County**



HEALTH



Washington State Officials Declare State Of Emergency As Measles Outbreak Continues

January 28, 2019 - 9:36 PM ET

VANESSA ROMO



PATTI NEIGHMOND



The Seattle Times

Education | Health | Local News | Local Politics

Measles outbreak has kept 800 Washington kids out of school

Originally published March 6, 2019 at 7:29 pm | Updated March 7, 2019 at 6:33 pm

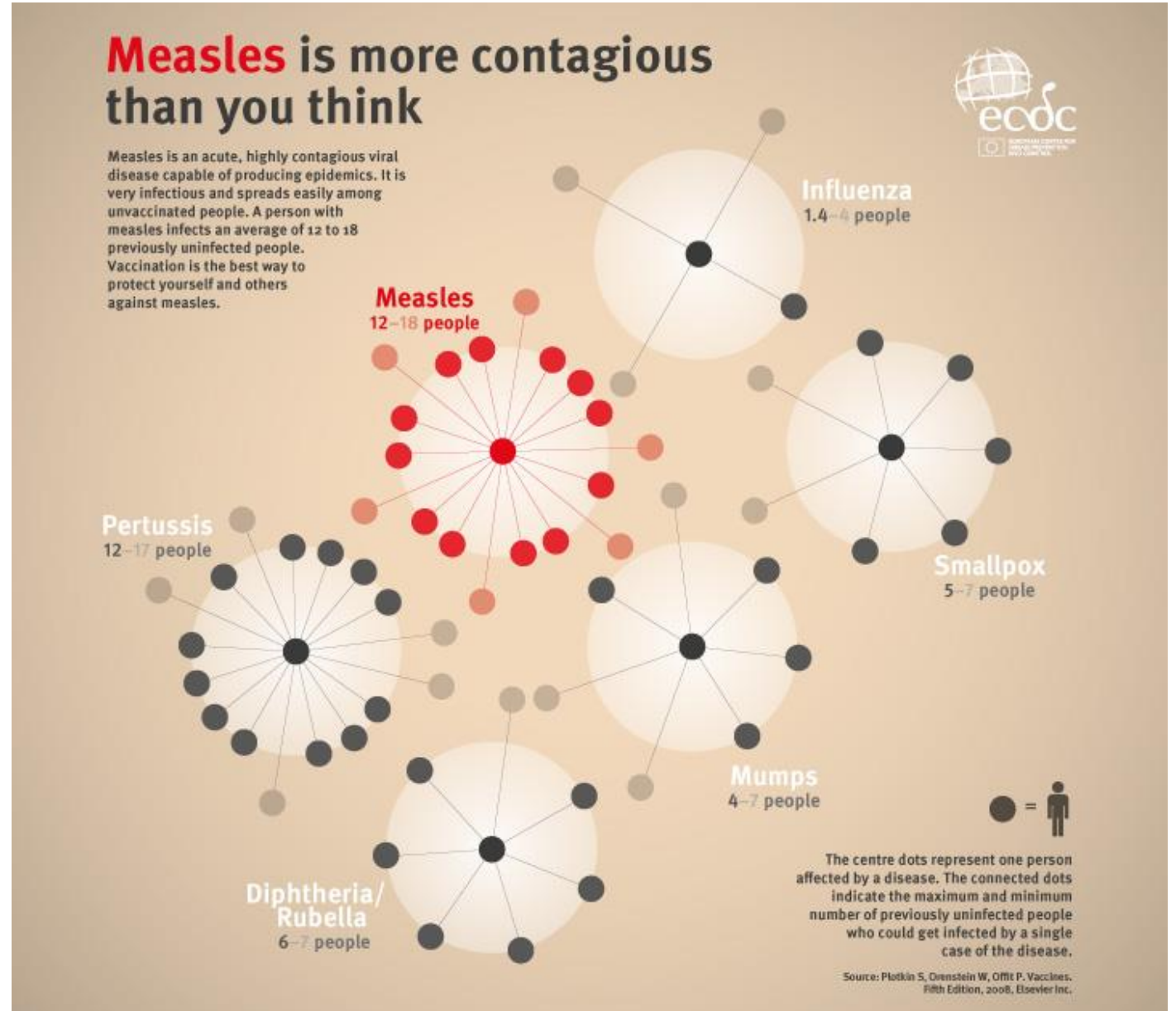


A measles, mumps and rubella (MMR) vaccine. (AP Photo/Eric Risberg, File)

This outbreak goes way beyond the 70 cases. If measles is diagnosed in a school, anyone — student or teacher — who does not have proof of vaccination is kept out. Students are struggling to keep up at home, parents are juggling child care and teachers have to shift duties.

Why Do We Care About Measles?

- Highly infectious
- International spread
- Can cause severe illness
- Costly to control
- Preventable!



Public Health — Seattle & King County

News and blogs
2019
May

[Home](#) > [Public Health — Seattle & King County](#) > [News and blogs](#) >

Public Health news and blog

Measles case in traveler to King County

May 4, 2019

Summary

A person who traveled to King County in late April has tested positive for measles. Most people are protected through immunization, but anyone who has not been vaccinated or had the measles may be at risk if they were in a location of potential measles exposure.

Story

A Canadian resident from British Columbia who traveled to the Seattle area in late April 2019 has tested positive for measles. The traveler, a man in his 40s, has since recovered from his illness.

Prior to arriving in King County, he spent time in Japan and New York during the period that he currently have measles outbreaks. This case has no connection to the recently-ended measles outbreak in Washington state.

in the Seattle area at several locations, including...
community to measles through vaccination or...
exposure.



The Seattle Times

[Health](#) | [Local News](#) | [Northwest](#) | [Puget Sound](#)

2 more measles cases in King County, bringing total to 12 in Puget Sound outbreak

July 10, 2019 at 4:51 pm | Updated July 11, 2019 at 9:24 am



By [Asia Fields](#)
Seattle Times staff reporter

King County public-health officials announced two more confirmed measles cases on Wednesday, bringing the total to 12 cases in Western Washington since an outbreak was declared in May.

A teenager and infant are the [most recent county residents](#) to contract the disease. Both had household contact with a person who had previously been diagnosed with measles, according to a statement from Public Health — Seattle & King County.

Officials don't think the infant exposed the public to the disease. The teenager was at Auburn Community Center while contagious July 6, and officials say people who were there from 2 to 11 p.m. that day may have been exposed.



Local Public Health Response

■ Detailed case investigations

- ✓ Reconstruct activities and locations during infectious period (4 days before - 4 days after rash onset) where others potentially exposed
- ✓ Identify susceptible close contacts for post-exposure prophylaxis, monitoring
- ✓ Facilitate evaluation and testing of potential cases

■ 90 suspected cases reported by healthcare providers and investigated

■ 397 close contacts of confirmed cases identified for active monitoring; thousands potentially exposed at public locations, business, schools

■ Worked with schools, healthcare facilities, businesses to provide guidance for exposed susceptible people to limit spread (exclusion)

- ✓ Extensive messaging and materials to public and partners

■ Over \$475,000 in costs to King County

■ Impact on capacity for other communicable disease work/responses

Washington state limits exemptions for measles vaccine; new law takes effect in July

May 10, 2019 at 10:32 am | Updated May 11, 2019 at 10:44 am



Anti-vaccination protesters Christie Nadzieja, front, Bob Runnells and Katie Bauer, all of Vancouver, Washington, stand up and turn their... (Gillian Flaccus / The Associated Press) [More](#) ✓

NEWS

PODCASTS

KUOW
SOUND STORIES. SOUND VOICES.

RADIOACTIVE



In this Friday, May 17, 2019 photo, Starr Roden, left, a registered nurse and immunization outreach coordinator with the Knox County Health Department, administers a vaccination to Jonathan Detweiler, 6, at the facility in Mount Vernon, Ohio.

CREDIT: AP PHOTO/PAUL VERNON

Seattle kids without measles vaccine or paperwork will be excluded from school



Measles is a highly contagious illness that can cause serious health problems, including brain damage, deafness and, in rare cases, death. Vaccination can prevent measles infections.

CREDIT: AP/ERIC RISBERG

Seattle Schools doesn't know which students are unvaccinated

OCT 04, 2019 at 9:14 AM

“Measles outbreaks sickened dozens of Washington children this year, and today marks the legal cutoff for most Seattle Public Schools students to show proof of immunizations or exemptions – or be kept out of school...”

The district does not plan to crack down for months even though the state health department is clear on this law: Students in Washington public schools, private schools and child care have 30 days after starting school to be immunized.”

Going Forward

- **State Legislation** – May 2019: Washington state legislature removed philosophical/personal objection exemption for MMR vaccine
- **Federal Legislation** - The VACCINES Act (H.R. 2862) introduced by Congresswoman Kim Shrier (WA-08) will fund research on vaccine hesitancy, require CDC to track changes in vaccination confidence, coverage and refusal rates, and support a public awareness campaign on the importance of vaccinations.
- **Federal Funding – The Prevention and Public Health Fund**
 - Critical support to core public health programs including vaccination programs
 - Progressive cuts and targeted for elimination in the President’s budget
- **Stable and robust federal funding is essential for preventing & responding to outbreaks.**