



# ***Social Determinants of Health Congressional Briefing***

December 15, 2020



# Audio

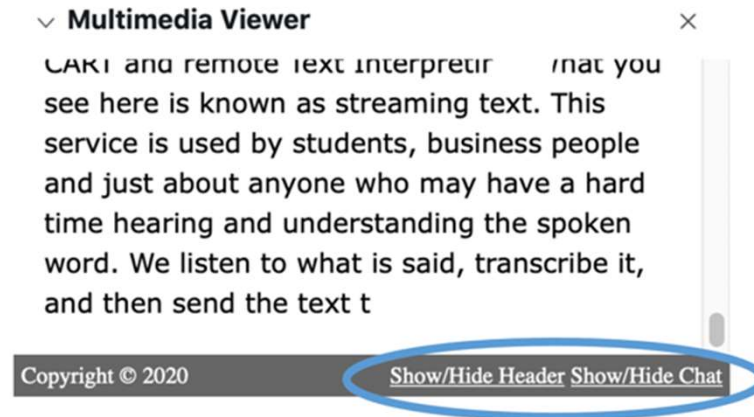
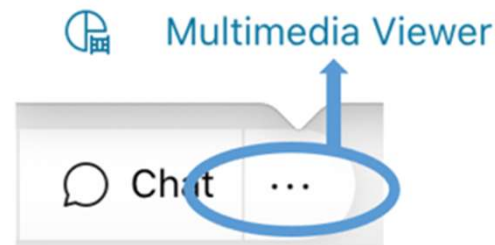
**Audio is through your computer speakers or headphones.**



# Closed Captioning

To see real time captioning:

1. At the bottom of your screen, click to open **Multimedia Viewer**
2. Click **Show/Hide Header**



# Q&A Feature



1. At the bottom of your screen, click to open the Q&A panel
2. Type your question in the **Q&A box**
3. Select **Ask: All Panelists**
4. Hit **Enter**





**Daphne Delgado**

Senior Government Relations Manager  
Trust for America's Health



**Melissa Quick**

Co-Chair  
Aligning For Health

# Agenda



## Welcome & Introductions

## What are Social Determinants?

## Perspectives from the Hill

**Liam Steadman**, Senior Policy Advisor, Rep. Cheri Bustos (D-IL-17)

**Joshua Izaak**, Legislative Director, Rep. Nanette Barragán (D-CA-44)

**Kristin Flukey**, Legislative Assistant, Rep. Cathy McMorris Rodgers (R-WA-05)

**Shane Hand**, Legislative Assistant for Rep. Tom Cole, (R-OK-04)

**Kripa Sreepada**, Health Policy Advisor, Sen. Tina Smith (D-MN)

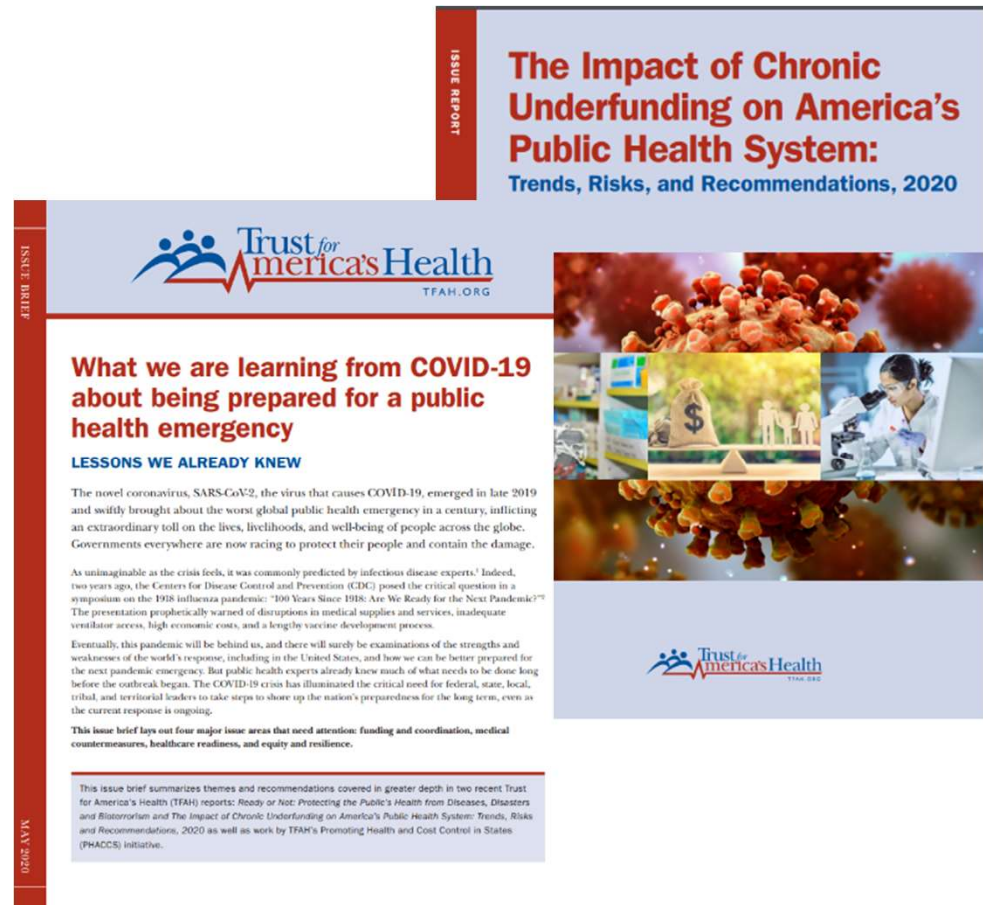
## Q&A Discussion




# Trust for America's Health



- Nonprofit focused on promoting evidence-based policy, research & advocacy
- Promoting optimal health for every person and community and making the prevention of illness and injury a national priority
- Prevention and health equity are foundational to policymaking





Advocacy organization focused on addressing the barriers and challenges that limit our ability to improve health outcomes and wellbeing for all.



We believe that social determinants factor into our overall health and wellbeing, and that healthcare itself is only one piece of the equation. Lack of adequate housing and nutrition, socioeconomic status, and race all contribute to our health.

We aim to serve as a conduit for meaningful, bipartisan engagement on social determinants and to advance policy ideas that empower government and health organizations to advance health equity by addressing both health and social needs.



# What are Social Determinants?



Stable,  
affordable  
housing and  
supportive  
housing



Access to quality  
nutrition



Ability to meet  
basic needs,  
including  
transportation or  
childcare



Healthy homes  
through energy  
subsidies,  
weatherization,  
etc.



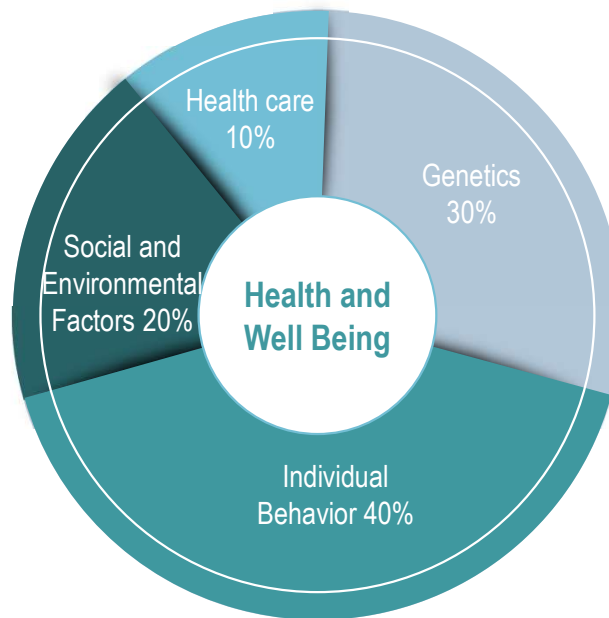
Access to health  
care services,  
including  
behavioral  
health services



Workforce  
training,  
employment  
opportunities,  
mobility and  
independence.

# How Social Determinants Impact Health

Health care is estimated to contribute to only 10% of health outcomes, yet we expend huge sums of money and focus solely on medical care



What we spend on being healthy

88% MEDICAL SERVICES

+

4% Healthy behaviors

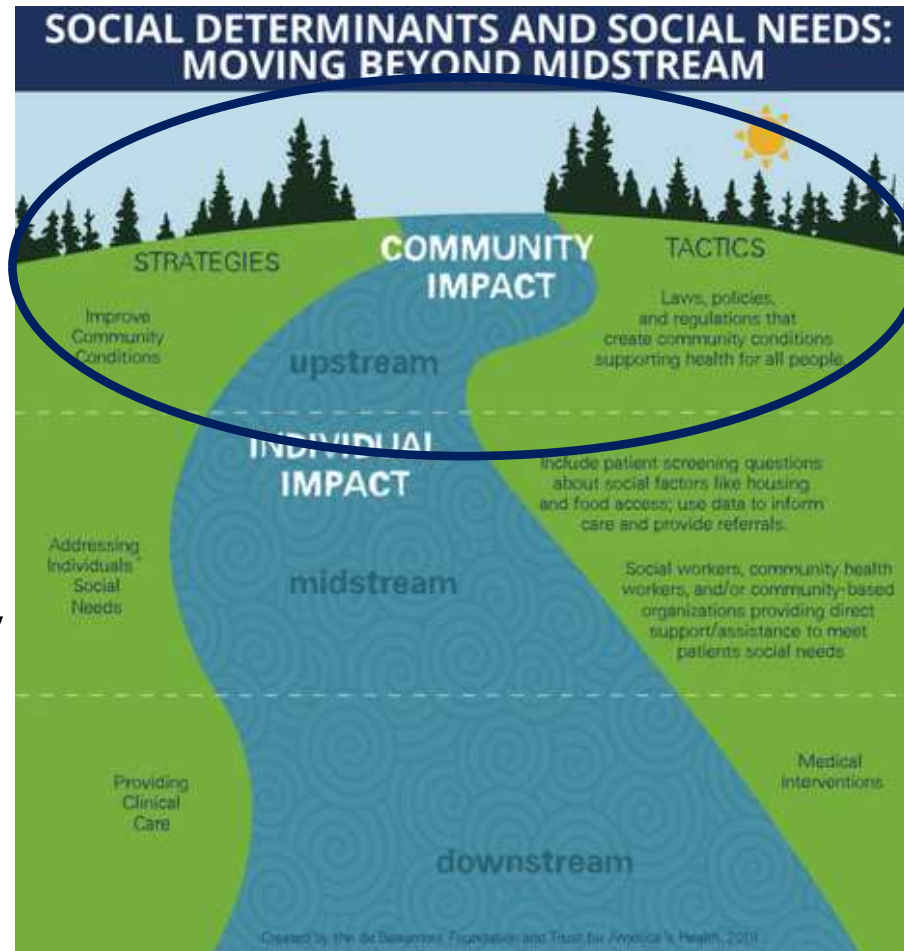


8% Others



# Working Upstream for Maximum Impact

- Underlying health of community puts some at higher risk
- Social and economic conditions influence individual and community health



# Public Health & Healthcare Working Together to Address SDOHs



## The Social Determinants Spectrum

*Roles for Public Health Departments (PHDs) in italics*

**Screenings** for necessary social, economic and safety issues in clinical & other settings

*PHDs can offer best practice screening materials & can aggregate/analyze data across facilities regarding needs*

**In-house social services** assistance (at clinical site where screening is performed)

*PHDs can convene health, community organizations & other sector reps to promote linkages, advocate for SDOH-related reimbursement & develop community resource materials*

**Anchor institutions** promoting equity via hiring, investments, community benefits

*PHDs can collaborate with 1 or more anchor institutions, assist them in prioritizing, evidence-based approaches & community-wide strategies*

**Community-based social and related services:** single or multiple programs/ services

*PHDs can demonstrate need with data, make case for funding for needed services and/or fund programs themselves*

**Changes to laws, regulations** or community-wide conditions; working across sectors

*PHDs can provide evidence of need and demonstrate efficacy of policies and laws that promote health & address SDOHs*

# Top Legislation That May Be Discussed Today



- Improving Social Determinants of Health Act (H.R. 6561/S. 4440)
- Social Determinants Accelerator Act (H.R. 4004 / S.2986)
- Collecting and Analyzing Resources Integral and Necessary for Guidance for Social Determinants Act of 2019 (H.R.4621)
- Utilizing National Data, Effectively Reforming Standards and Tools, to Address Negative Determinates of Health Act (S.1323)

For more information -- <https://aligningforhealth.org/social-determinants-legislation/>



# Welcome to Our Congressional Panelists



**Kristin Flukey**

Legislative Assistant

Rep. Cathy McMorris Rodgers (R-WA-05)



**Shane Hand**

Legislative Assistant

Rep. Tom Cole, (R-OK-04)



**Joshua Izaak**

Legislative Director

Rep. Nanette Barragán (D-CA-44)



**Kripa Sreepada**

Health Policy Advisor  
Sen. Tina Smith (D-MN)



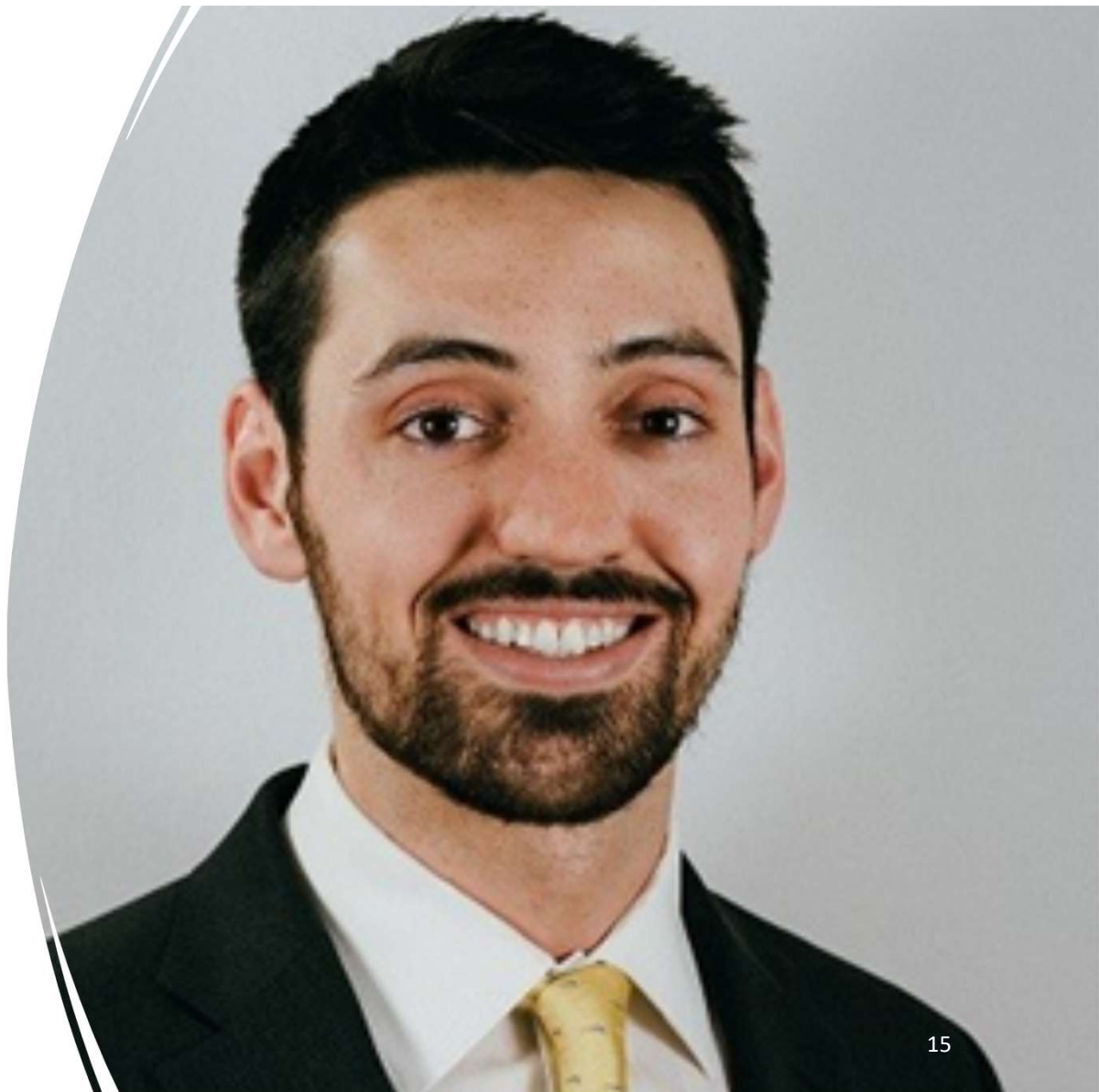
**Liam Steadman**

Senior Policy Advisor  
Rep. Cheri Bustos (D-IL-17)



**Liam Steadman**  
Senior Policy Advisor  
Rep. Cheri Bustos  
(D-IL-17)

---



**Joshua Izaak**  
Legislative Director  
Rep. Nanette Barragán  
(D-CA-44)

---



# **Kristin Flukey**

Legislative Assistant

Rep. Cathy McMorris Rodgers  
(R-WA-05)

---



**Shane Hand**  
Legislative Assistant  
Rep. Tom Cole  
(R-OK-04)

---





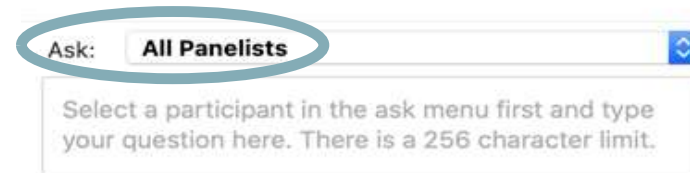
**Kripa Sreepada**  
Health Policy Advisor  
Sen. Tina Smith  
(D-MN)

---



# Q & A Feature

1. At the bottom of your screen, click to open the Q&A panel
2. Type your question in the **Q&A box**
3. Select **Ask: All Panelists**
4. Hit **Enter**





A photograph of a woman with long, wavy brown hair, wearing a light blue button-down shirt and a red and white striped scarf, smiling as she selects produce at a market stall. She is surrounded by various fruits and vegetables, including pumpkins and leafy greens. In the background, there is a modern building with a circular glass structure on its roof. A large, semi-transparent circular graphic with the text "Q&A" is overlaid on the left side of the image.

**Q&A**



[ddelgado@tfah.org](mailto:ddelgado@tfah.org)

@HealthyAmerica1

[www.tfah.org](http://www.tfah.org)



[mquick@aligningforhealth.org](mailto:mquick@aligningforhealth.org)

@aligning4health

[www.aligningforhealth.org](http://www.aligningforhealth.org)